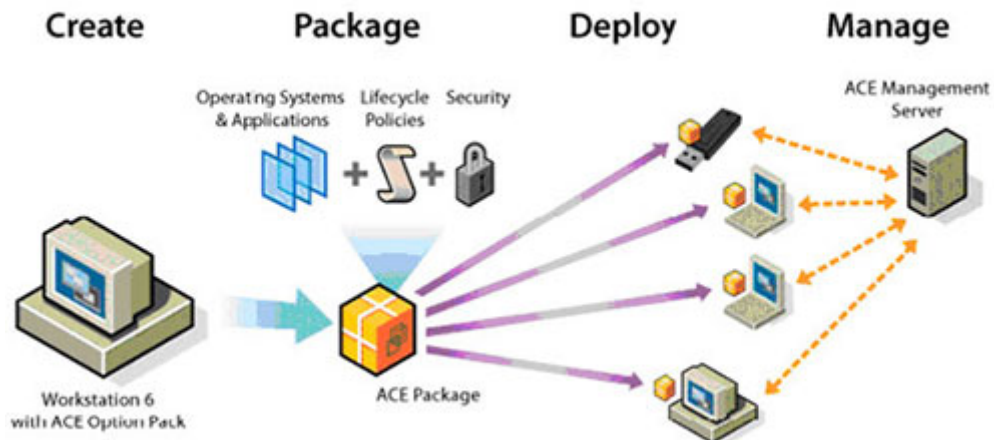


VERICEPT MONITOR VIRTUAL DEMO

- I. DESCRIPTION
 - II. SYSTEM REQUIREMENTS
 - III. INSTALL
 - IV. HOW TO USE
 - V. CONTACT VERICEPT
-

I. DESCRIPTION

VMware ACE 2 is a comprehensive enterprise solution that organizations use to provision standardized client PC environments inside secure, centrally managed virtual machines called ACEs. Each ACE contains a complete client PC—including the operating system and all applications.



VERICEPT-CONTENT-ACE

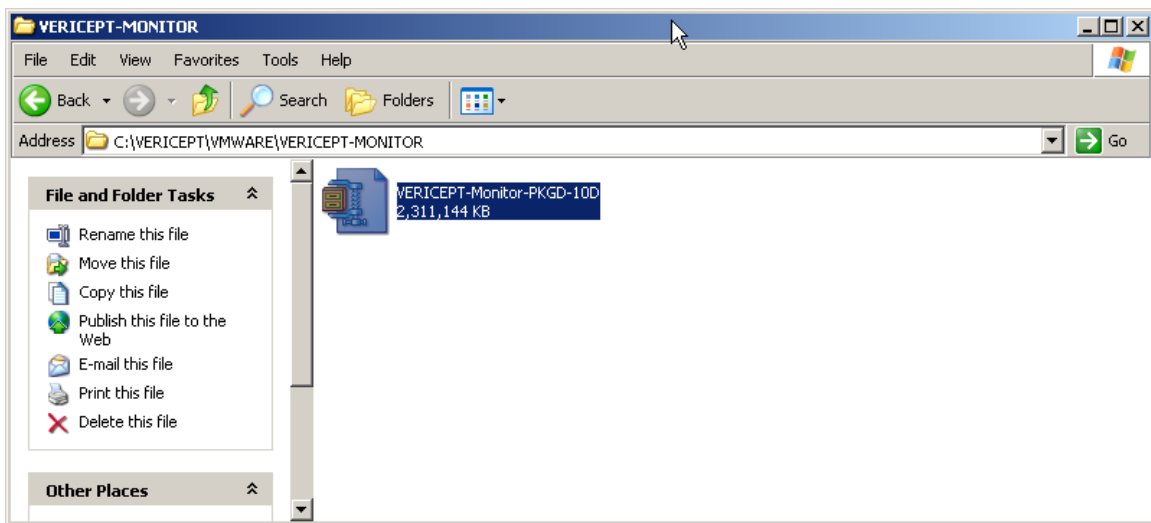
ACE NAME	VERICEPT-CONTENT-ACE
ACE TYPE	ACE PACKAGE
ACE PLAYER	VMware ACE Player 2.0 (Included)
ACE PLAYER HOST OS	Windows and Linux
ACE GUEST OS	Linux Red Hat 4
ACE FILE SIZE (ZIP)	2.17 GB
ACE ACTIVATION TIME	30 DAYS
ACE MAIN APPLICATION	VERICEPT CONTENT 8.1 (Standalone)
ACE MAX SIZE	100 GB

II. SYSTEM REQUIREMENTS

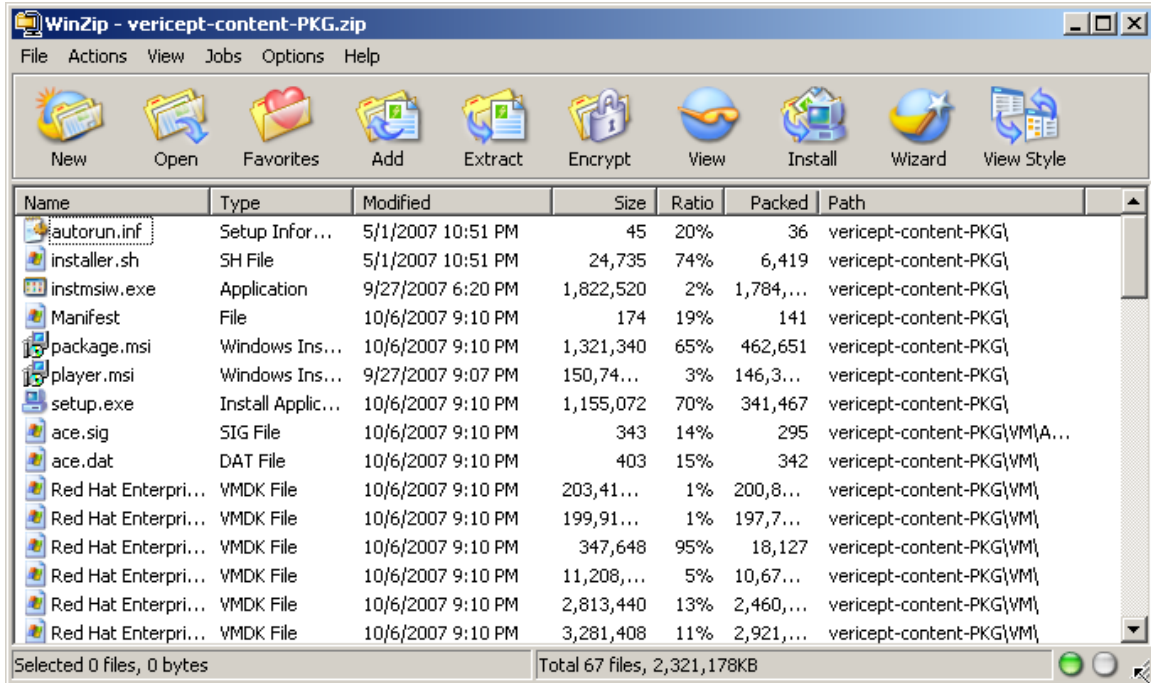
SYSTEM OS	WINDOWS OR LINUX
SYSTEM RAM	2 GB MIN
SYSTEM HD	120 GB
SYSTEM NETWORK	1 OR 2 NICs

III. INSTALL

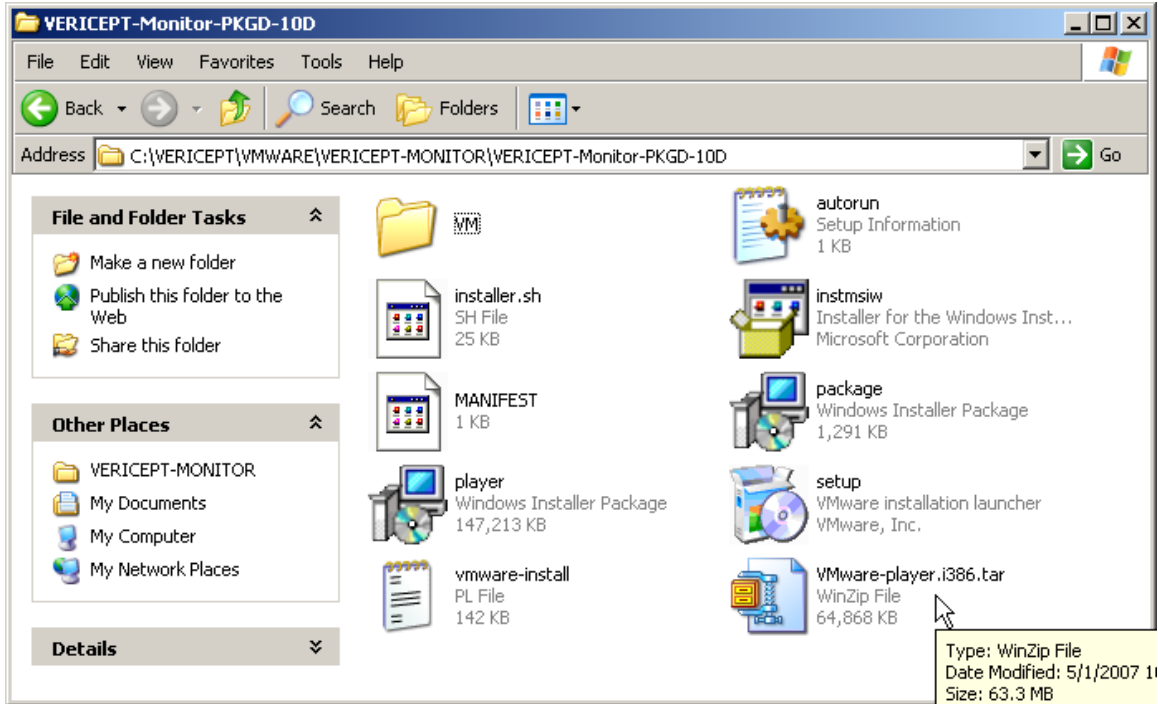
1. Download or copy Vericept Content Package, ZIP file, to temporary directory.



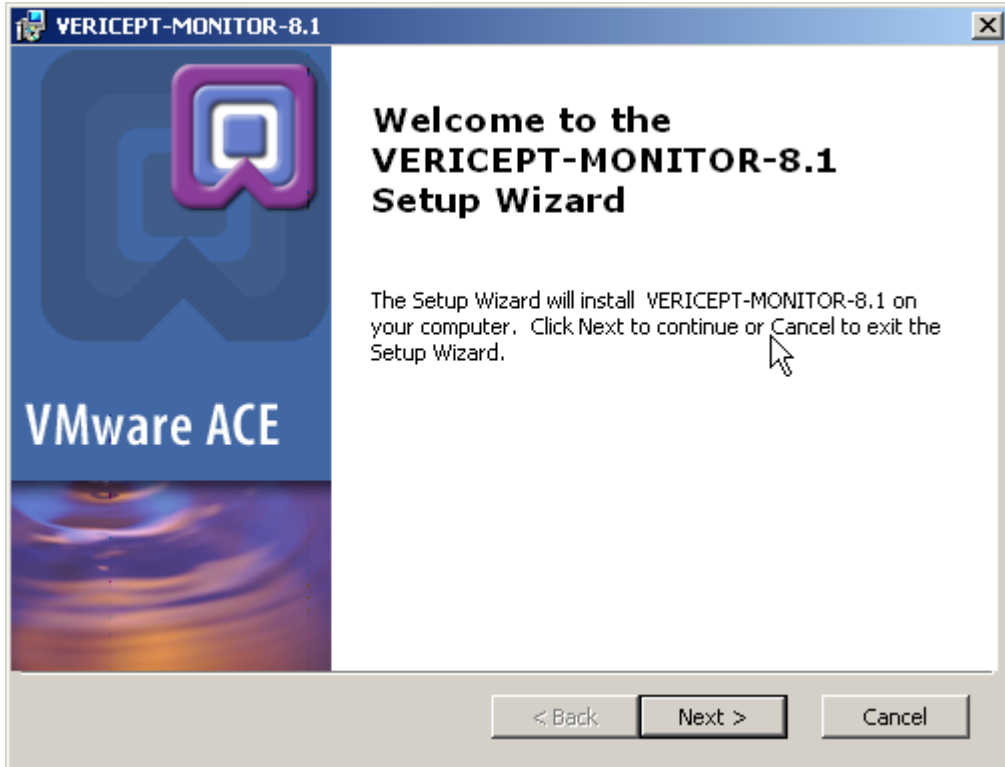
2. Unzip (vericept-content-PKG.zip) file.



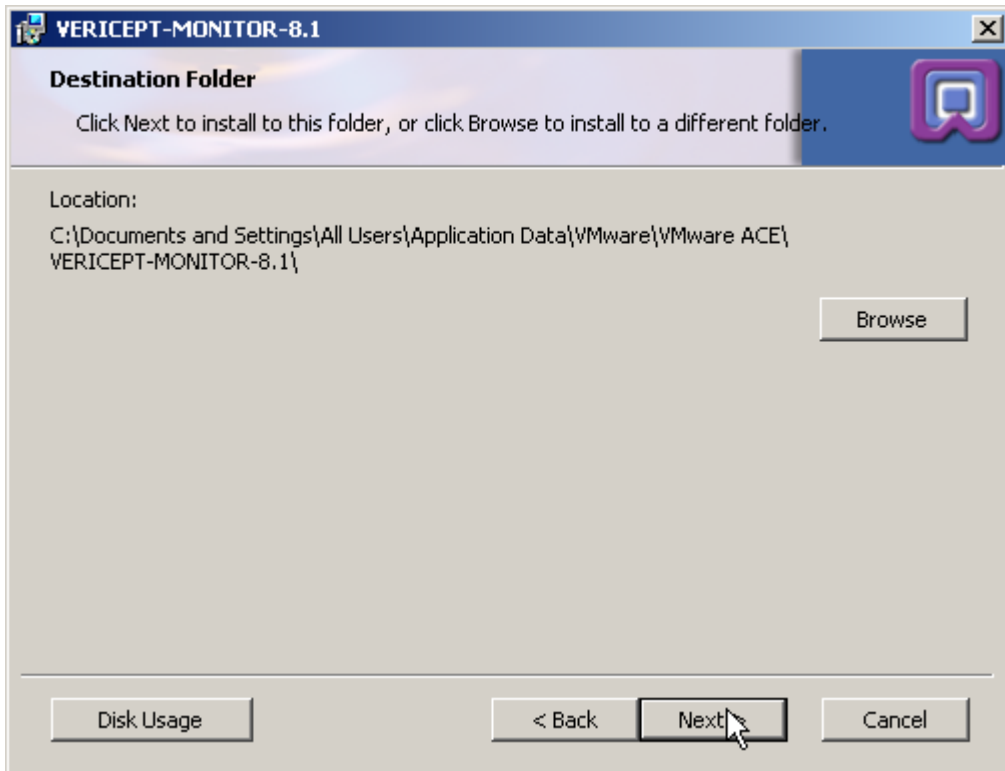
3. Install Vericept Content Package. Use “setup.exe”



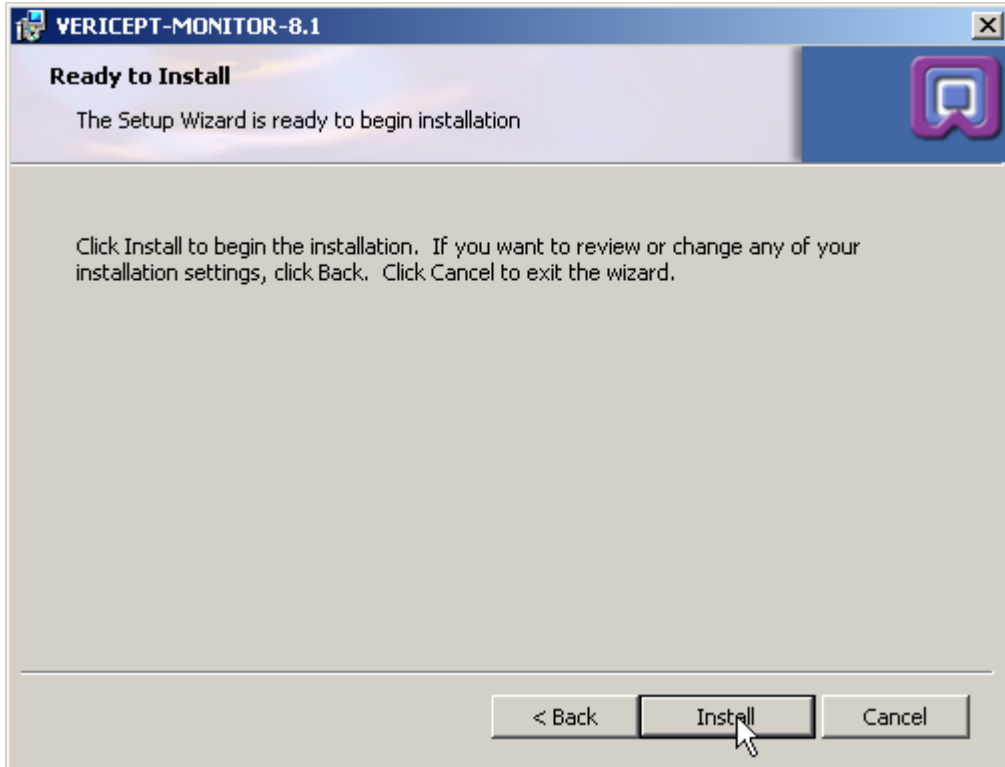
4. Start VERICEPT-CONTENT-ACE Setup



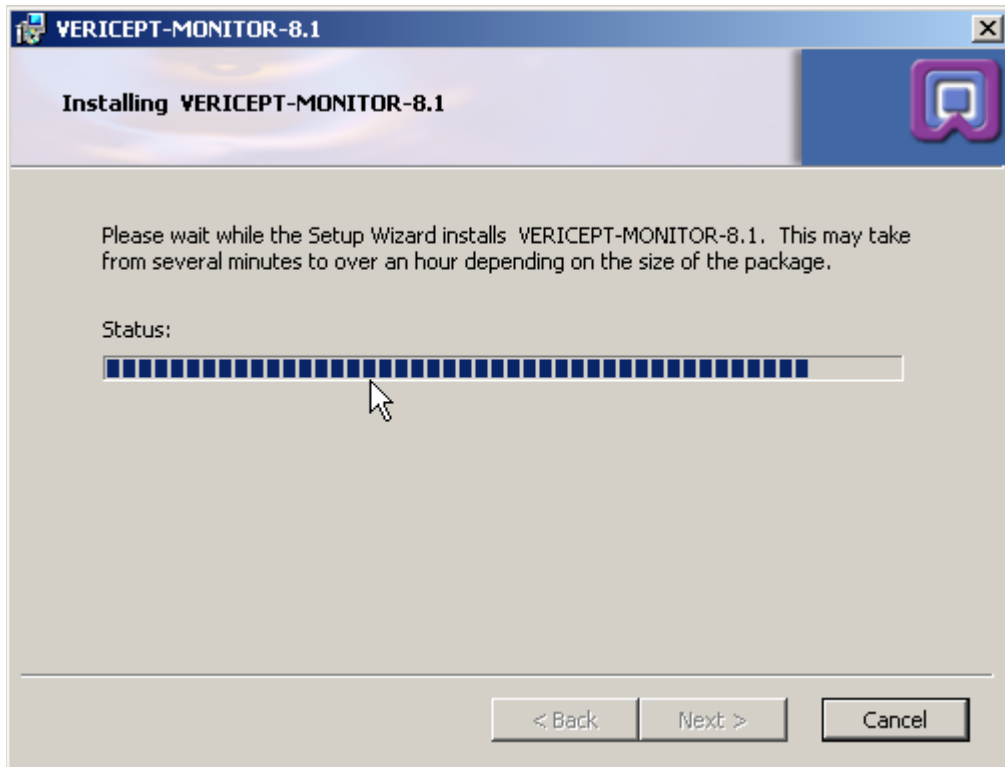
5. Click **Next>** to continue. Select directory to install package.



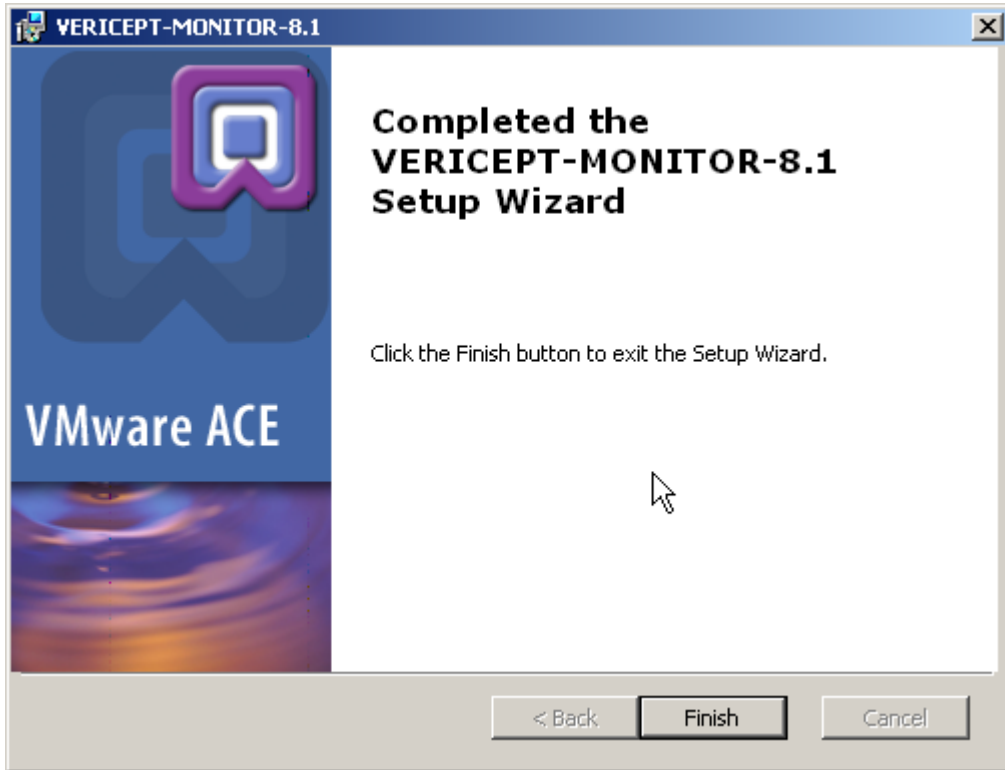
6. Click **Next>** to continue. Click **Install** to start installation



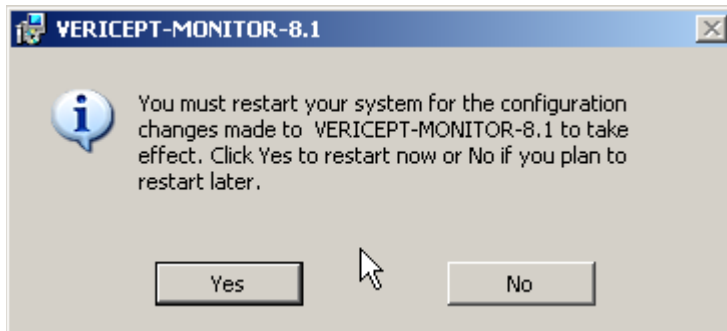
7. Install



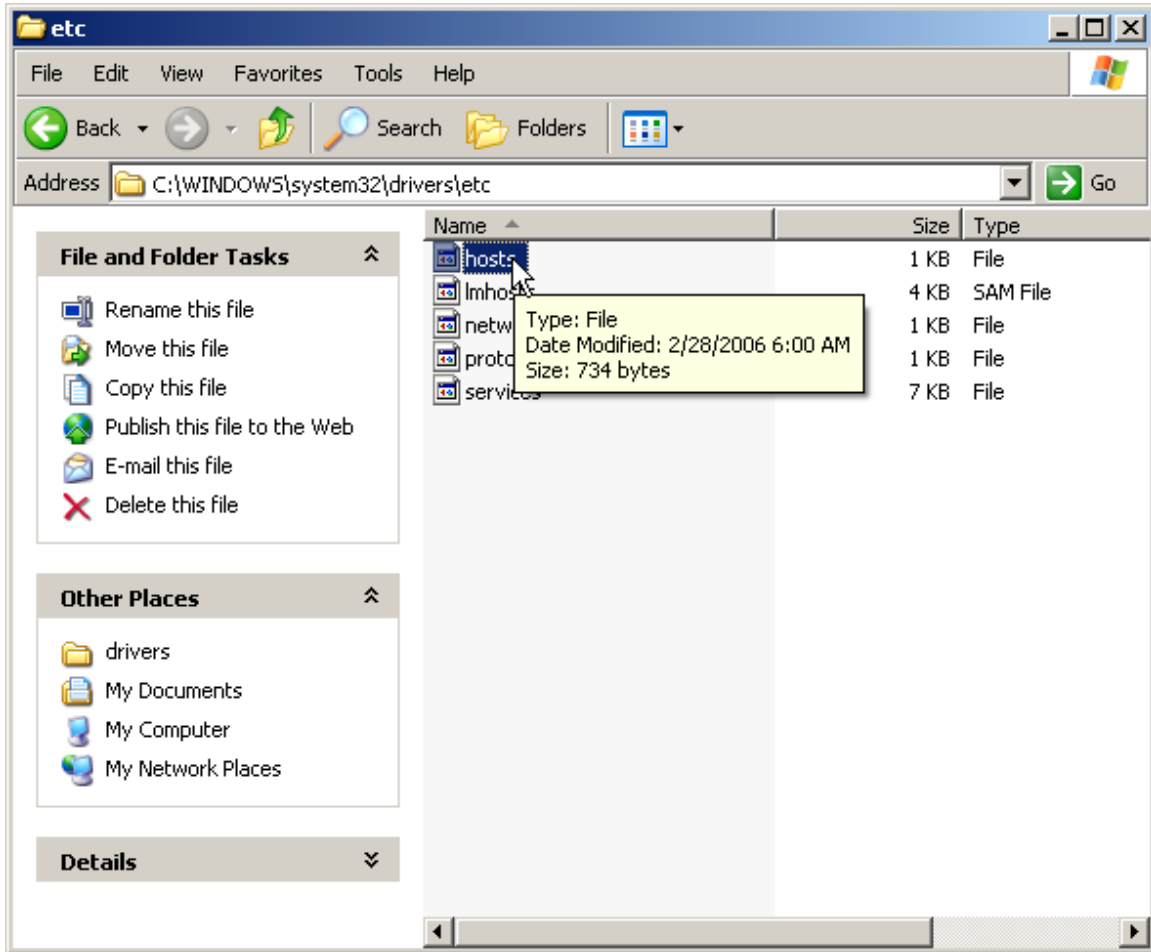
8. Complete Install



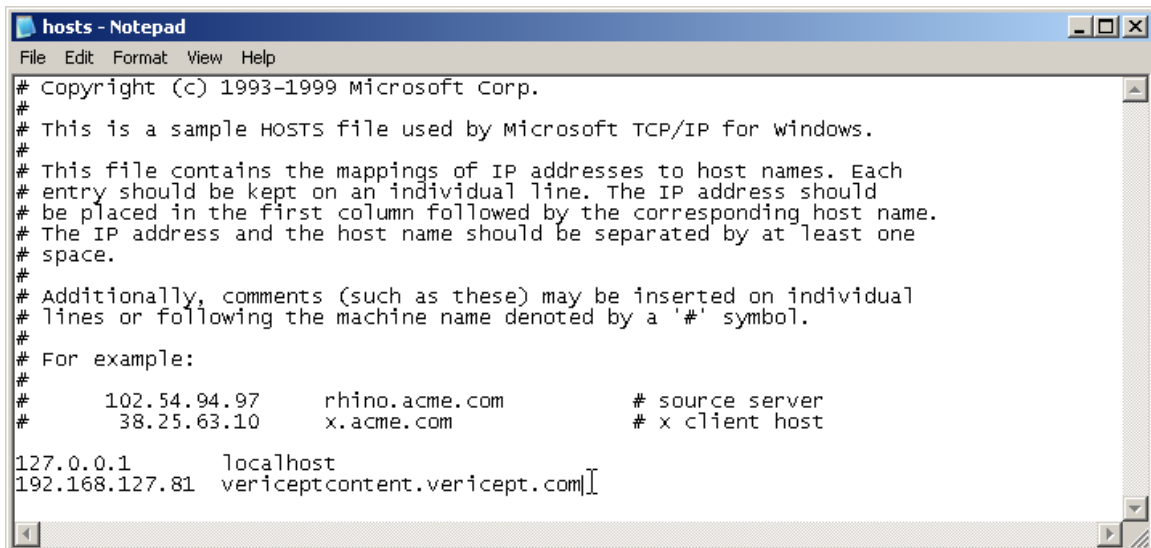
9. Restart system.



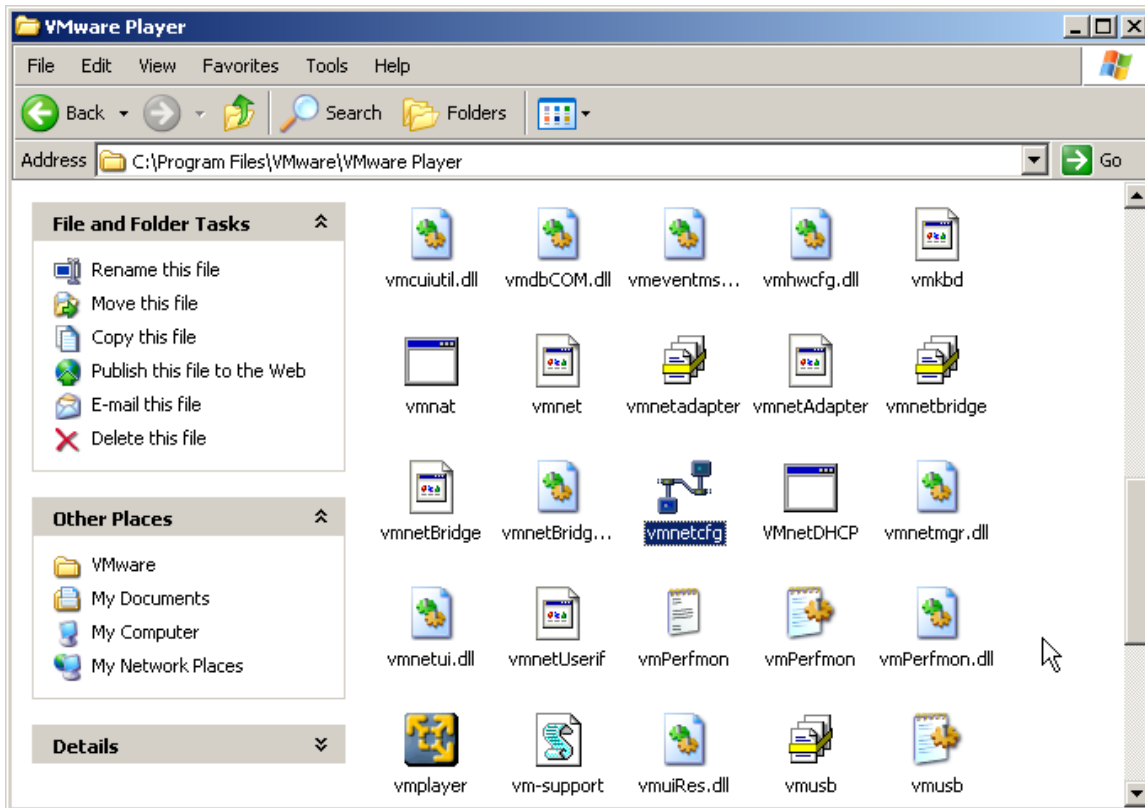
10. Edit local hosts file. (Use “Notepad to open file”)



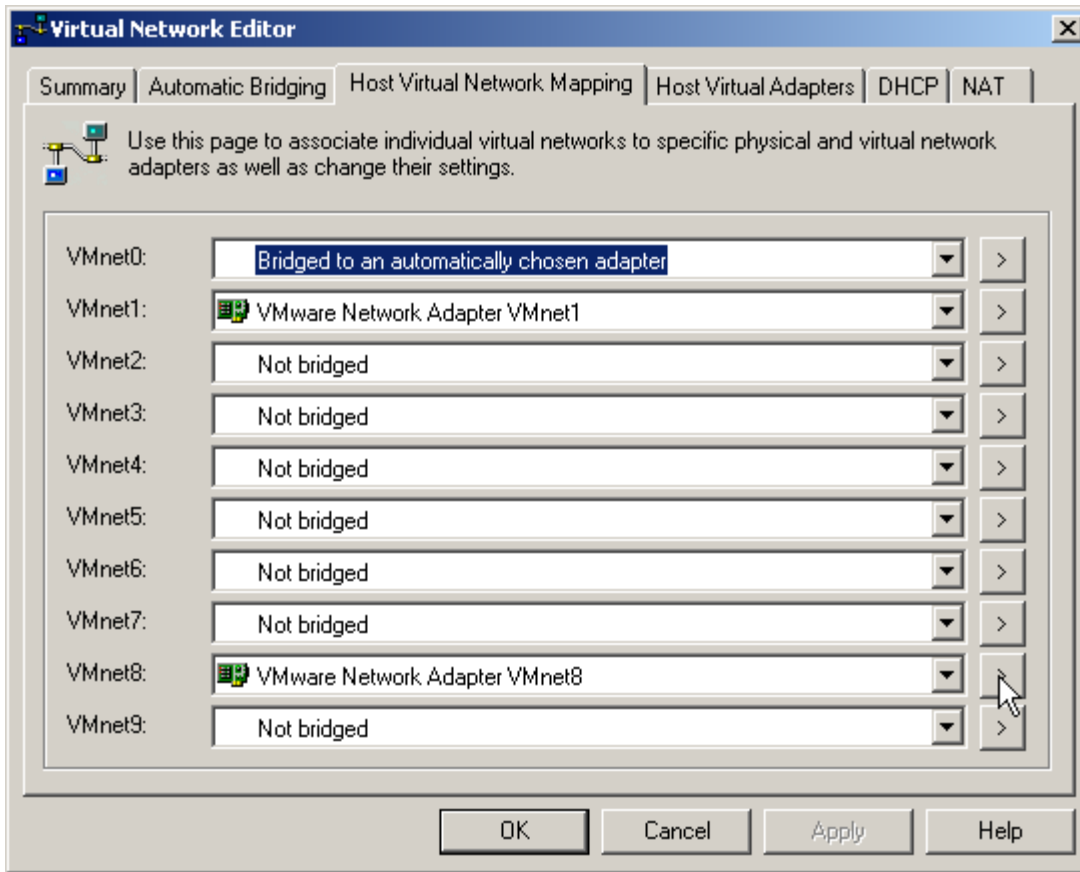
11. Enter VERICEPT-MONITOR information



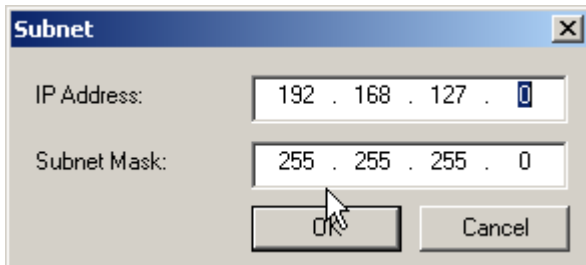
12. Use **vmnetcfg** to configure the VMware Network environment
(C:\Program Files\VMware\VMware Player\vmnetcfg)



13. Select the "Host Virtual Mapping" tab to configure the **VMnet8** interface.



14. Configure VMnet8 “subnet” (192.168.127.0). Click OK and then APPLY



15. Configure VMnet8 “DHCP” . Use the following parameters. Click OK and then APPLY

DHCP Settings

Settings

VMnet host: VMnet8

Subnet: 192 . 168 . 0 . 0

Netmask: 255 . 255 . 255 . 0

Start IP address: 192 . 168 . 127 . 128

End IP address: 192 . 168 . 127 . 250

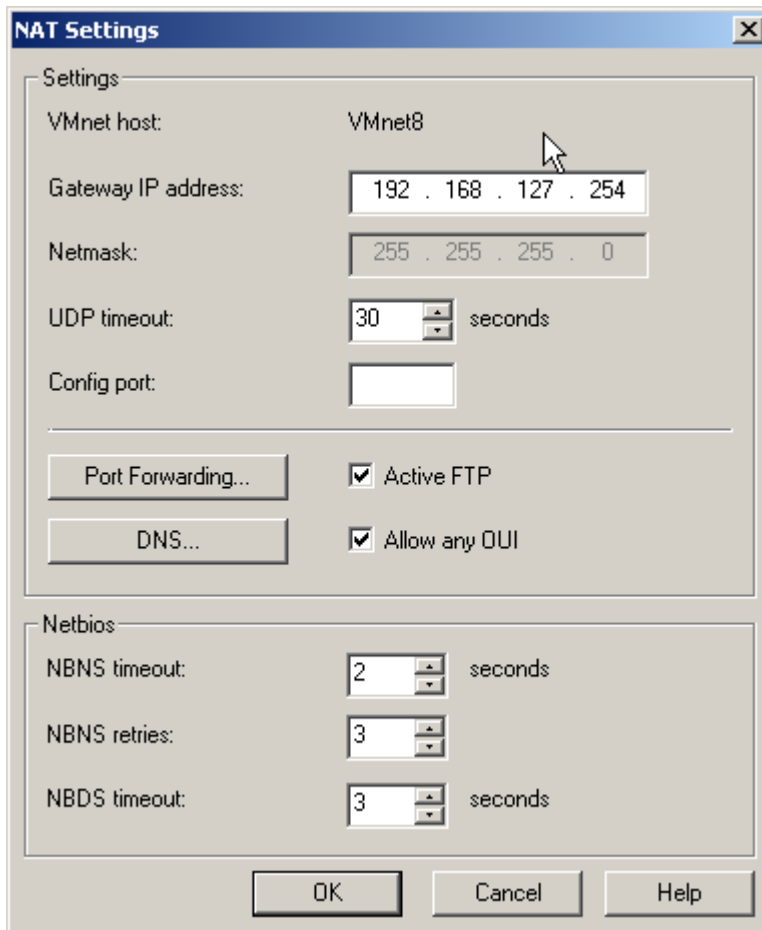
Broadcast address: 192 . 168 . 0 . 255

Lease duration for DHCP clients

	Days:	Hours:	Minutes:
Default lease time:	0	0	30
Max lease time:	0	2	0

OK Cancel Help

16. Configure VMnet8 “NAT”. Use 192.168.127.254 as the gateway. Click OK and then APPLY



VI. HOW TO USE

1. Start VERICEPT-CONTENT demo ACE (Read and accept license agreement)



License Agreement

Please read the following license agreement carefully.

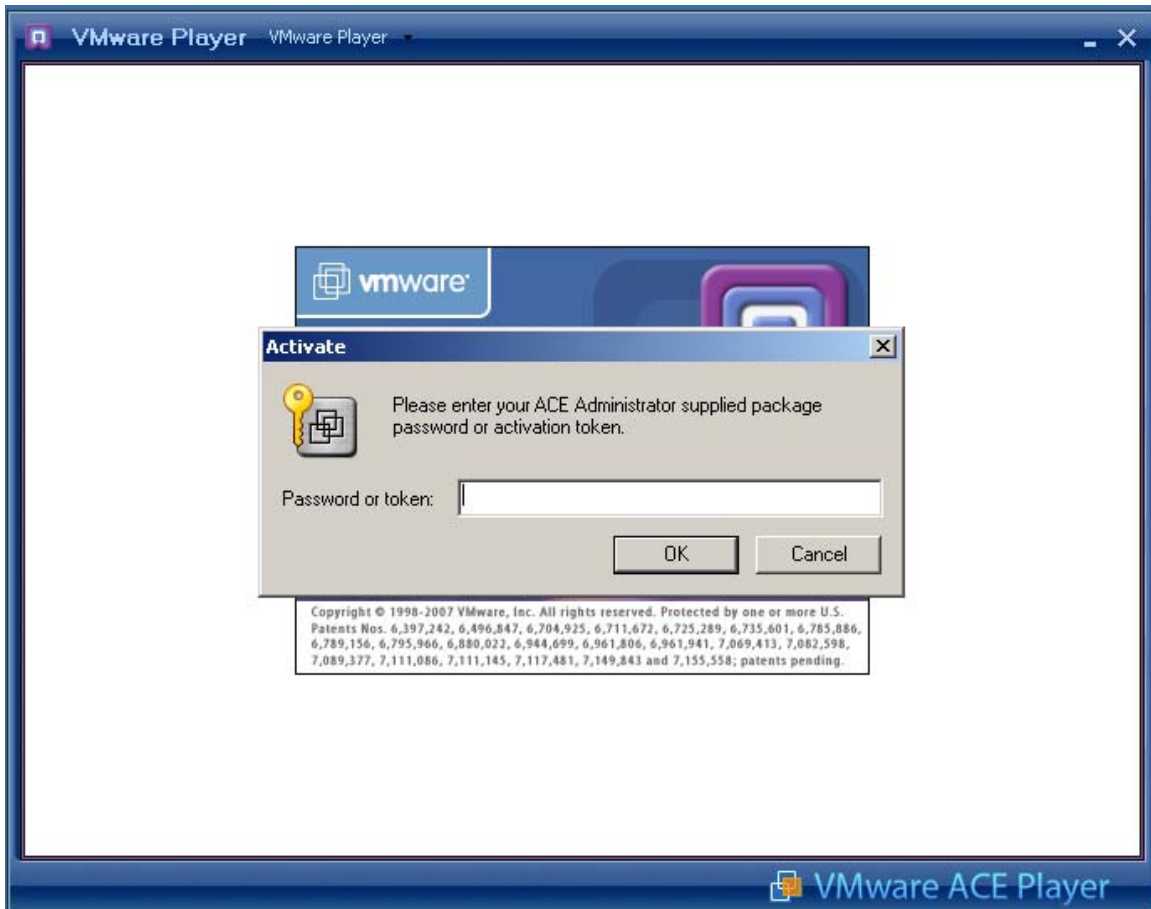
VMWARE MASTER END USER LICENSE AGREEMENT

NOTICE: BY DOWNLOADING AND INSTALLING, COPYING OR OTHERWISE USING THE SOFTWARE, YOU AGREE TO BE BOUND BY THE TERMS OF THIS EULA. IF YOU DO NOT AGREE TO THE TERMS OF THIS EULA, YOU MAY NOT DOWNLOAD, INSTALL, COPY OR USE THE SOFTWARE, AND YOU MAY RETURN THE UNUSED SOFTWARE TO THE VENDOR FROM WHICH YOU ACQUIRED IT WITHIN THIRTY (30) DAYS AND REQUEST A REFUND OF THE LICENSE FEE, IF ANY, ALREADY PAID UPON SHOWING PROOF OF PURCHASE. (HOWEVER, THE VENDOR MAY...

- Yes, I accept the terms in the license agreement
- No, I do not accept the terms in the license agreement

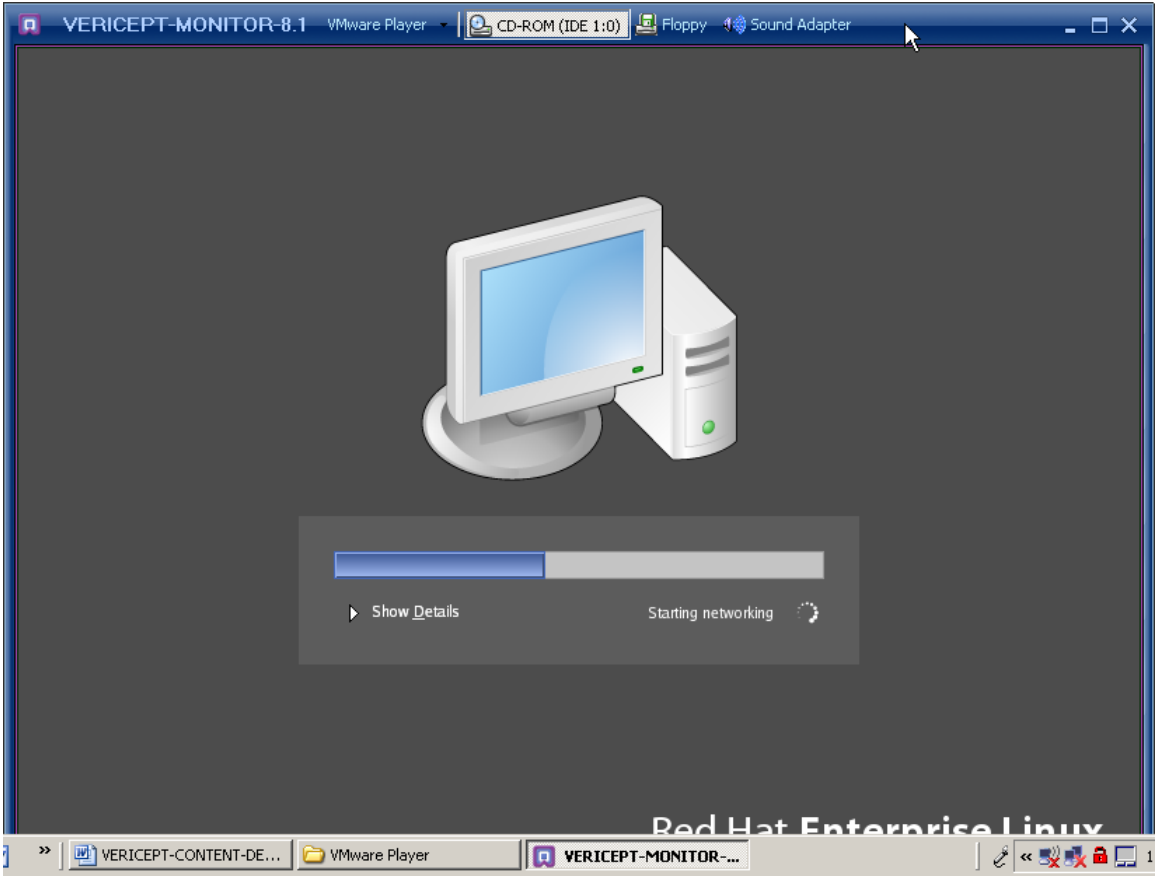
OK

2. Enter the correct VERICEPT-CONTENT demo ACE password to activate package. (Password: vericept)

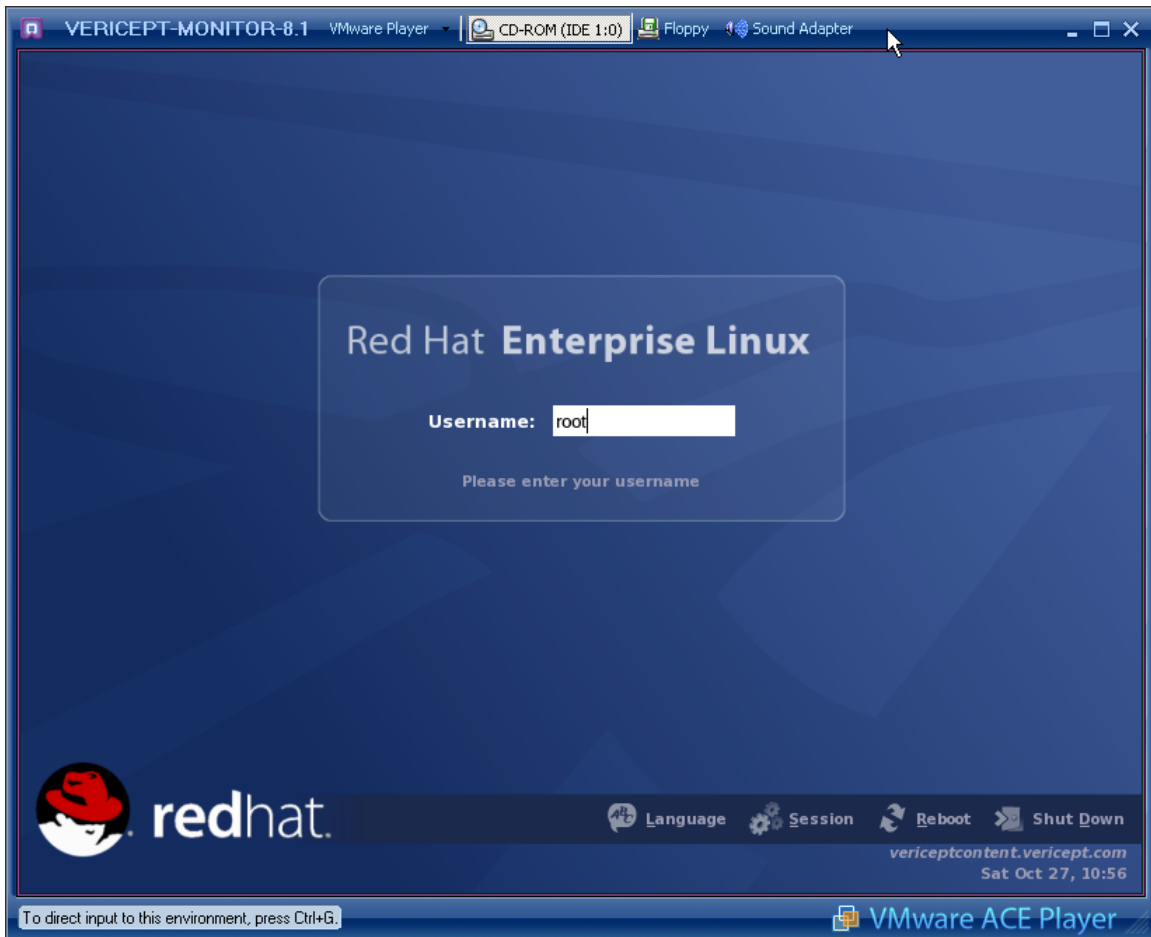


3. Continue installation






4. Start VERICEPT-MONITOR application. Login as **root** to verify settings.
(Password: **v3r1c3pt**)



VERICEPT-MONITOR-8.1 VMware Player | CD-ROM (IDE 1:0) | Floppy | Sound Adapter

Red Hat Enterprise Linux

Password:



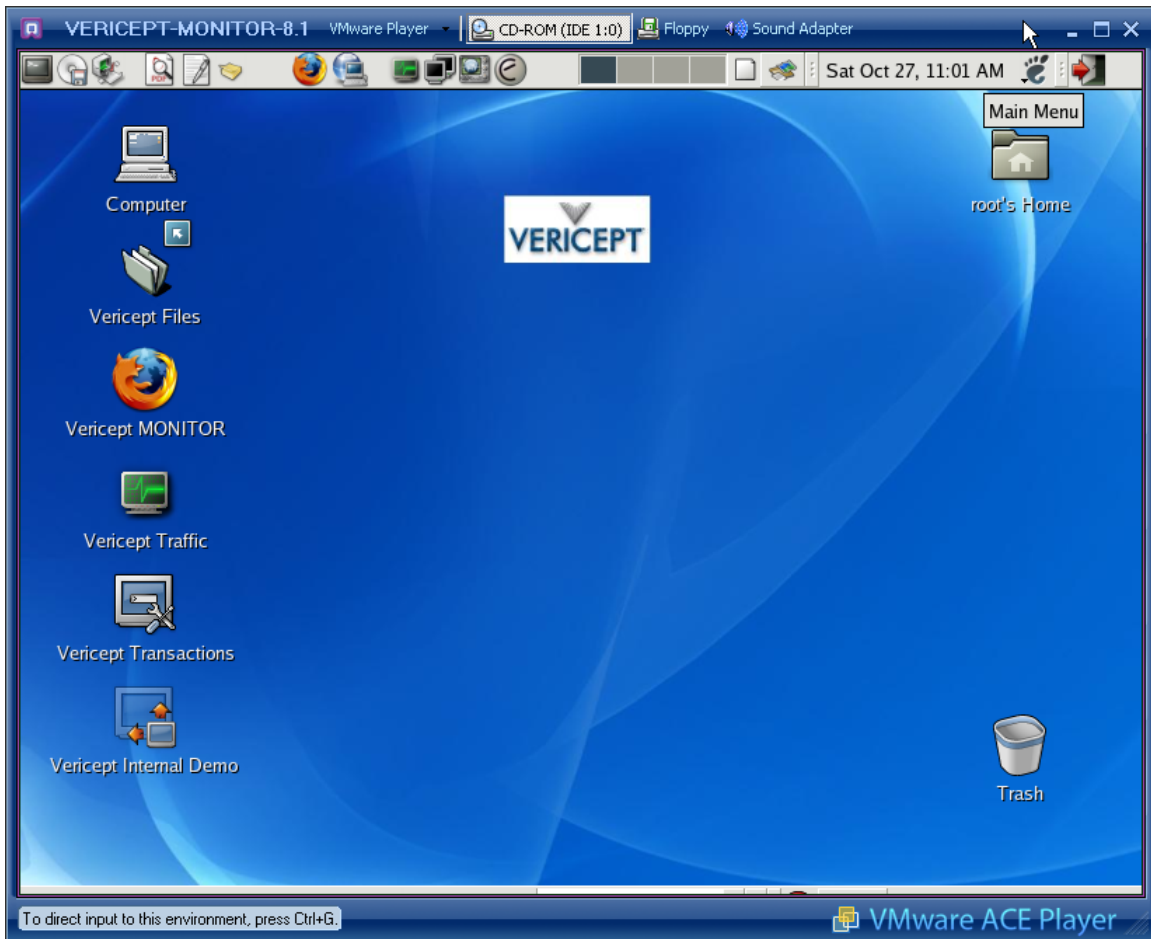
redhat.

Language Session Reboot Shut Down

vericeptcontent.vericept.com
Sat Oct 27, 10:58

To direct input to this environment, press Ctrl+G.

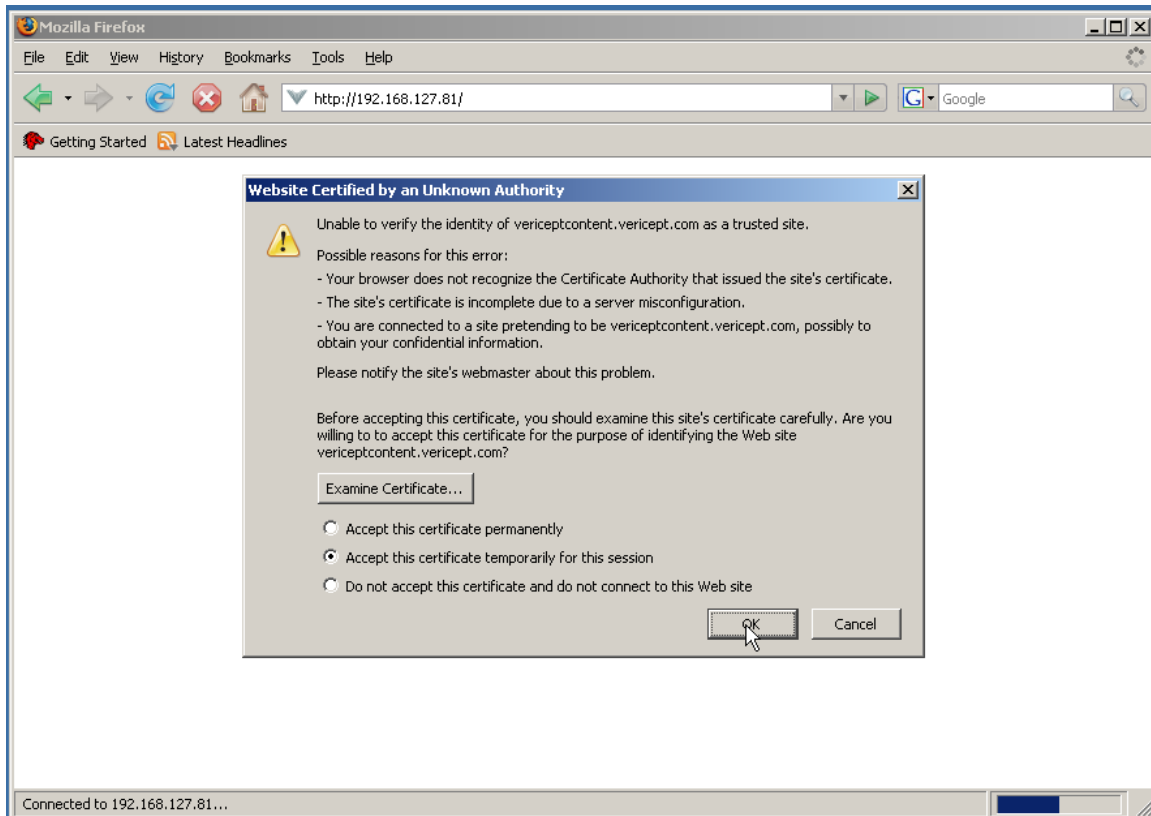
VMware ACE Player

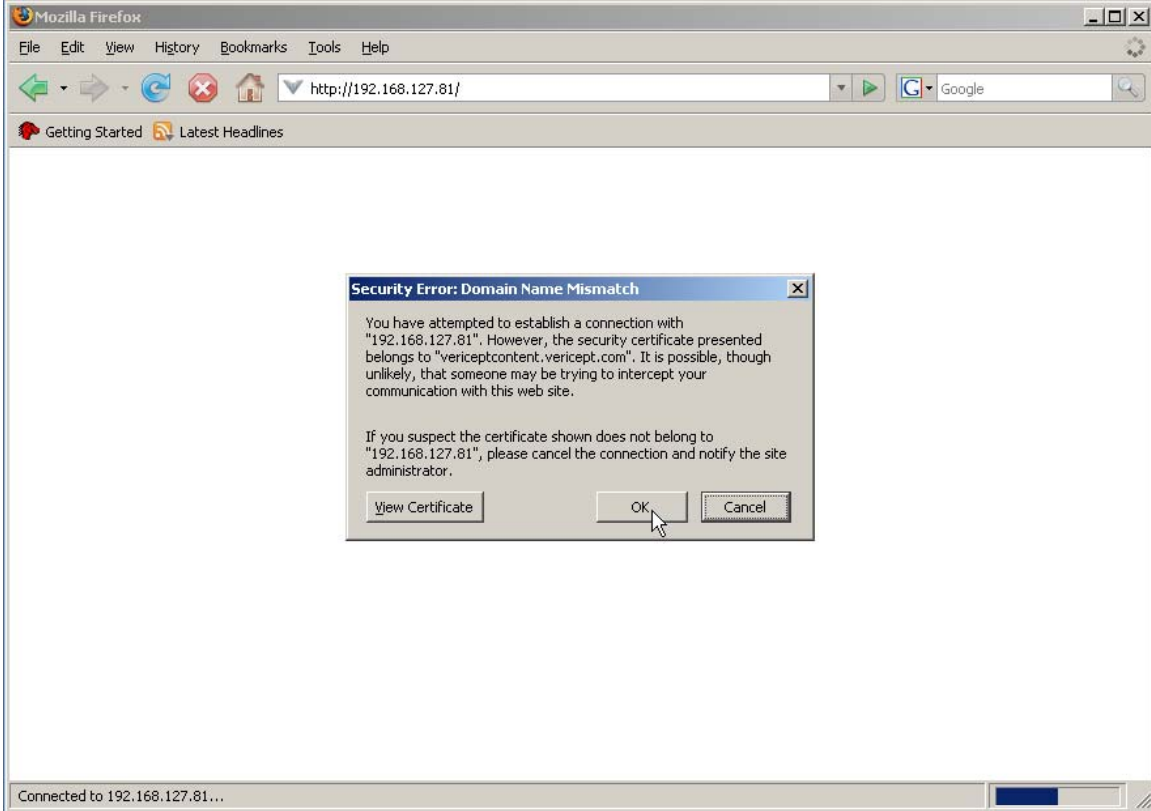


5. Ping the VERICEPT-CONTENT ACE, from the host system to verify connectivity.

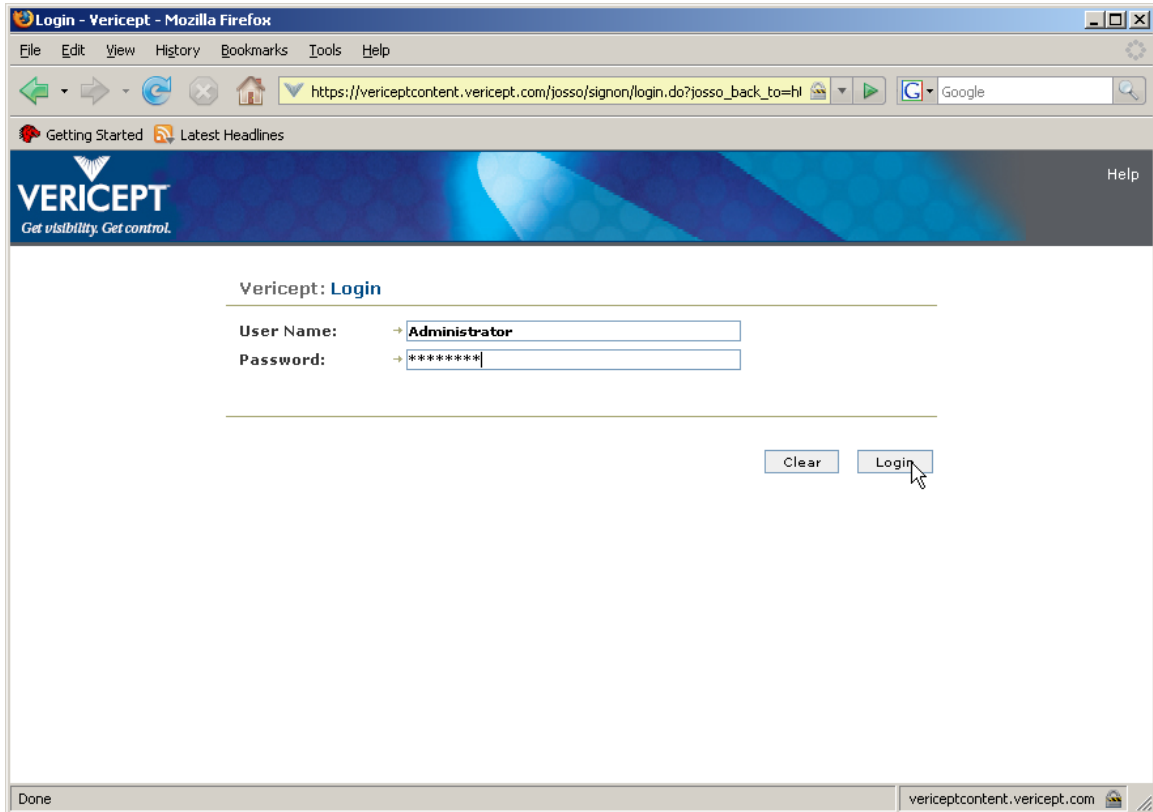
```
C:\WINDOWS\system32\cmd.exe
C:\>ping 192.168.127.81
Pinging 192.168.127.81 with 32 bytes of data:
Reply from 192.168.127.81: bytes=32 time=7ms TTL=64
Reply from 192.168.127.81: bytes=32 time<1ms TTL=64
Reply from 192.168.127.81: bytes=32 time<1ms TTL=64
Reply from 192.168.127.81: bytes=32 time<1ms TTL=64
Ping statistics for 192.168.127.81:
    Packets: Sent = 4, Received = 4, Lost = 0 (0% loss),
    Approximate round trip times in milli-seconds:
        Minimum = 0ms, Maximum = 7ms, Average = 1ms
C:\>
```

6. Connect to the VERICEPT-CONTENT ACE using a browser. From host system.





7. Login. (User: Administrator ~ Password: vericept)



8. Start using your VERICEPT-CONTENT ACE...

The screenshot shows a Mozilla Firefox browser window with the title "Vericept: Vericept:Home - Mozilla Firefox". The address bar contains the URL "https://vericeptcontent.vericept.com/aup-reports/Welcome.do". The browser's menu bar includes "File", "Edit", "View", "History", "Bookmarks", "Tools", and "Help". The page content features the Vericept logo on the left and "Administrator" with "Logout" and "Preferences" links on the right. A navigation menu below the logo lists "Workspace", "Risk Dashboard", "Search", "Reports", "Categories", "Policies", "Workflow", "Administration", and "Help". The main content area is titled "Vericept: Home" and contains a welcome message for the Administrator, including the last login time and failed login attempts. It also includes a thank-you message and a link to the Customer Support Center. The footer contains the copyright notice "Copyright © 2003-2007, Vericept Corporation, All Rights Reserved." The browser's status bar at the bottom shows "Done" and the URL "vericeptcontent.vericept.com".

Vericept: Vericept:Home - Mozilla Firefox

File Edit View History Bookmarks Tools Help

https://vericeptcontent.vericept.com/aup-reports/Welcome.do

Getting Started Latest Headlines

VERICEPT Administrator
Logout | Preferences

Workspace Risk Dashboard Search Reports Categories Policies Workflow Administration Help

Vericept: Home

Welcome Administrator.
Your last login was 1:18 AM, Oct 7, 2007
Failed login attempts since then: 0

Thank you for your continued support of Vericept. We are always striving to deliver solutions to address a growing number of risk and exposure concerns around Information Privacy, Compliance and Acceptable Use. At the same time, we are continually working to improve and enhance our technology platform. If you should have suggestions for enhancements to the Vericept solution, please send them to enhancements@vericept.com.

For the latest news and information on updates to the Vericept Solution, visit the [Customer Support Center](#).

Copyright © 2003-2007, Vericept Corporation, All Rights Reserved.

Done vericeptcontent.vericept.com

VII. HOW TO USE

1. Check the Vericept Traffic Tool to verify connectivity and traffic flow.